

list
P. 1/2

Wednesday, December 19, 1990

K.T. Oslin hits right chords

By Joe Edwards

NASHVILLE, Tenn. (AP) — The graffiti was printed neatly in black ink on a bathroom stall in a cafe in Due West, S.C.

"I ain't never gonna love nobody but Cornell Crawford," it declared.

When K.T. Oslin read it, she chuckled. Then, pondering its directness and determination, she knew she had a song. The result is "Cornell Crawford," one of Oslin's songs in her third country music album, "Love in a Small Town."

Cut after cut, the themes and emotions are from everyday, ordinary life and hit special chords within the listener.

It is her first LP in two years, a rather long hiatus for country music. So this normally gutsy singer-songwriter confesses to a touch of trepidation.

"If you don't put out an album every year, you can be dead meat," the 48-year-old performer said in an interview as she munched on bread and Brie.

"We'll see. But I don't think you become dead meat until you are doing inferior work. Or mediocre work."

Based on her previous records, Oslin has little reason to worry. Her albums, "80's Ladies" and "This Woman," both sold more than 1 million copies.

She won three Grammy awards during a meteoric rise in country music. In 1988, she unseated Reba McEntire as the Country Music Association's female vocalist of the year. McEntire had won the honor four straight years.

Now Oslin offers "Love in a Small Town," an album weaving songs of wry amusement,



Country singer K.T. Oslin has released her third album, "Love in a Small Town," which deals with everyday life. The title for one song came from graffiti on a washroom wall.

emotional strength, nostalgia and loneliness.

The LP's cut "Come Next Monday" is about a woman vowing to end a relationship.

"Oo-Wee" is about staying home from work and frolicking. "Mary and Willie" is about two people with no love interests in their life.

"Love Is Strange" is Oslin's

remake of a 1956 rhythm and blues hit by Mickey & Sylvia. Kenny Rogers and Dolly Parton also recently recorded it.

Oslin's crooning "... My sweet babe, you're the one" has almost as much feeling as an embrace.

And "Cornell Crawford," inspired by the writing on a toilet wall, tells of dedication for the man who makes sparks fly.

"We all wish we had a Cornell Crawford," Oslin mused about the song. "I've been doing it in the live show for two years and it gets some of the best response of anything. People are intrigued about someone that emphatic. The sincerity of it struck me."

She wrote or co-wrote seven of the nine cuts and plays keyboard on every song.

Kay Toinette Oslin was born in Crossitt, Ark., but spent most of her early years in Mobile, Ala. As a teen-ager, she settled in Houston. Ending up in New York, she was a chorus girl in theatrical productions and then turned to work as a studio backup vocalist and ad jingle singer.

She also showed a flair for songwriting. An aunt lent her \$7,000 to finance a Nashville showcase performance, which caught the attention of RCA Records. She signed an RCA recording contract in 1986 at a time when most record companies were looking for singers almost half her age.

Oslin became one of Nashville's most intriguing personalities, launching a new career in her mid-40s and writing songs from the perspective of a strong woman. Her hit singles included "Do Ya," "Two Hearts," "Hey Bobby," "Didn't Expect It to Go

■ Turn to K.T. Oslin, page 5

Daily Courier News

12/19/90

P. 2/2

EN 12/90

Eye also saw K.T. Oslin, the 80's Ladies Lady at the Music Mill recording with two of my favorite people producing, Jim Cotton and Joe Scaife.

K.T. Oslin

From page 1

Down This Way" and "This Woman."

"I was different," she said.

She also was outspoken. She has said candidly that she hated country music when she grew up.

"When I listened to country music in the '50s, it was almost all males who seemed very old and sang about drinking and cheating on their wives or girlfriends. A 15-year-old does not relate to that," Oslin said.

"Fortunately, it has changed, and people who say today that they don't like country music probably haven't listened to it.

"Some of it I like today, some

of it I don't. I don't like the real twangy, hard core, straight ahead, old style country music. I like some of it, but on a steady diet, no."

Her current album is not her only new project. She just recorded a duet with Barry Manilow, "Baby It's Cold Outside," which will be on his next album.

Oslin also has received considerable attention for her music video of "Come Next Monday." In it, she portrays the bride of Frankenstein.

"It has nothing at all to do with the song," she explained.

Nashville jingle house Hummingbird Productions has completed writing and producing the music on new 30- and 60-second Christmas spots for Target Department stores with vocal talents Clint Black and K.T. Oslin. The song, "Season of Harmony," is the title track from an RCA holiday LP available exclusively through Target, which features traditional yules done by Restless Heart, Clint, K.T., Matraca Berg and many others... MR 12-23-90

The Nashville Network (TNN)— "Home for the Holidays" (4:30 p.m. Dec. 5), with Clint Black and K.T. Oslin; "Charlie Daniels: Christmas Time Down South" (4:30 p.m. Dec. 15); and "Christmas, the Cowboy Way" (7:30 p.m. Dec. 17), featuring the whimsical trio Riders in the Sky. 12/90

Program grid is on page 136
December 11/12, 1990

PROGRAMS:
7:30 AM SWAN LAKE; 2 hrs., 30 min. 8735
8:00 AM BET LIVE FROM L.A.—Interview 863611
9:00 AM CNN SHOWBIZ TODAY 212096
9:30 AM Country-western singer K.T. Oslin.
10:00 AM CBS WORLD MONITOR—John Hart 609980
11:00 AM HBO HISTORY OF THE NBA, 60 min. 401926
11:30 AM COMMERCIAL PROGRAMS.

Program grid is on page 156

10: December 12/13, 1990

10: Achim Hammer.

11PM 2 ARSENIO HALL (CC); 60 min. 58473

Scheduled: Singer K.T. Oslin; Cicely Tyson.

7 RICK DEES; 60 min. 90473

Scheduled: Rock band Alias. Lisa Canning.

11 POWER IN THE PACIFIC

11:00 2 Arsenio Hall □ Actress Cicely Tyson; singer K.T. Oslin; actress Andie MacDowell.

7 Into the Night Starring Rick Dees Jim Palmer; music group Alias.

11 Power in the Pacific □ Why ending the Cold War in the Pacific is proving to be more difficult than in Europe.

Chicago Sun Times
12/12/90



OPRAH GOES COUNTRY

Three Country acts from RCA Records made an appearance on the Oprah Winfrey show in June this year. Clint Black performed "A Better Man," The Judds sang their new single "Born To Be Blue" and their hit "Grandpa;" and K. T. Oslin performed the classic "80's Ladies." Pictured on the set of the show l-r: Wynonna Judd; K. T. Oslin; Clint Black; Oprah; Kathy Mattea and Naomi Judd.

CM-USA 12/90

Graffiti inspires K.T. Oslin

Song finds spot on third album

By **JOE EDWARDS**
Associated Press writer

NASHVILLE, Tenn. — The graffiti was printed neatly in black ink on a bathroom stall in a cafe in Due West, S.C.

"I ain't never gonna love nobody but Cornell Crawford," it declared.

When K.T. Oslin read it, she chuckled. Then, pondering its directness and determination, she knew she had a song. The result is "Cornell Crawford," one of Ms. Oslin's songs in her third country music album, "Love in a Small Town."

Cut after cut, the themes and emotions are from everyday, ordinary life and hit special chords within the listener.

It is her first LP in two years, a rather long hiatus for country music. So this normally gutsy singer-songwriter confesses to a touch of trepidation.

"If you don't put out an album every year, you can be dead meat," the 49-year-old performer said as she munched on bread and Brie.

"We'll see. But I don't think you become dead meat until you are doing inferior work. Or mediocre work."

Based on her previous records, Ms. Oslin has little reason to worry. Her albums, "'80s Ladies" and "This Woman," both sold more than 1 million copies.

She won three Grammy awards during a meteoric rise in country music. In 1988, she unseated Reba McEntire as the Country Music Association's female vocalist of the year. Ms. McEntire had won the honor four straight years.

Now Ms. Oslin offers "Love in a



AP Laserphoto

K.T. Oslin

Small Town," an album weaving songs of wry amusement, emotional strength, nostalgia and loneliness.

The LP's cut "Come Next Monday" is about a woman vowing to end a relationship. "Oo-Wee" is about staying home from work and frolicking. "Mary and Willie" is about two people with no love interests in their life.

"Love Is Strange" is Ms. Oslin's remake of a 1956 rhythm and blues hit by Mickey & Sylvia. Kenny Rogers and Dolly Parton also recently recorded it.

Ms. Oslin's crooning "... My sweet babe, you're the one" has almost as much feeling as an embrace.

And "Cornell Crawford," inspired by the writing on a toilet wall, tells of dedication for the man who makes sparks fly.

"We all wish we had a Cornell Crawford," Ms. Oslin mused about the song. "I've been doing it in the live show for two years and it gets some of the best response of any-

thing. People are intrigued about someone that emphatic. The sincerity of it struck me."

She wrote or co-wrote seven of the nine cuts and plays keyboard on every song.

Kay Toinette Oslin was born in Crossitt, Ark., but spent most of her early years in Mobile, Ala. As a teen-ager, she settled in Houston. Ending up in New York, she was a chorus girl in theatrical productions and then turned to work as a studio backup vocalist and ad jingle singer.

She also showed a flair for songwriting. An aunt lent her \$7,000 to finance a Nashville showcase performance, which caught the attention of RCA Records. She signed an RCA recording contract in 1986 at a time when most record companies were looking for singers almost half her age.

Ms. Oslin became one of Nashville's most intriguing personalities, launching a new career in her mid-40s and writing songs from the perspective of a strong woman. Her hit singles included "Do Ya," "Two Hearts," "Hey Bobby," "Didn't Expect It to Go Down This Way" and "This Woman."

"I was different," she said.

She also was outspoken. She has said candidly that she hated country music when she grew up.

"When I listened to country music in the '50s, it was almost all males who seemed very old and sang about drinking and cheating on their wives or girlfriends. A 15-year-old does not relate to that," Ms. Oslin said.

"Fortunately, it has changed, and people who say today that they don't like country music probably haven't listened to it."

"Some of it I like today, some of it I don't. I don't like the real twangy, hard core, straight ahead, old-style country music. I like some of it, but on a steady diet, no."

12/11/90
DEC 11 1990

Contemporary country from K.T.

By Jerry Sharpe

Scrrips Howard News Service

■ "Love in a Small Town," K.T. Oslin, RCA.

K.T. Oslin not only offers the listening pleasure of her clear, distinctive vocals on this new album, but showcases herself as a top-flight songwriter, too.

Oslin, 49, has marched to a different drummer since she debuted in 1987 with the "80s Ladies" album that sold more than a million copies. Her second album, "This Woman," was another million-seller in 1988.

Her acceptance showed there was a place in country music for a performer who sang and wrote about today's women.

And now, on her new album, she writes slice-of-life songs and love ballads with a different viewpoint than the usual country music. It's a modern woman's perspective.

For instance, on "Come Next Monday," her current hit from

Review

"Love," she applies a reducing diet timetable and discipline to breaking off a love affair.

She's philosophical in "Mary and Willie," a good story song about two people remaining lonely because neither will settle for less than the perfect mate. And she lightens up with "Oo-we," a sexy, right-to-the point frolic.

The album also has the first song she ever wrote. In 1980, Oslin, who hails from Arkansas and Texas, was doing bit parts on Broadway. While touring, she saw the words "I ain't never gonna love nobody but Cornell Crawford" scrawled on the wall of a ladies' room.

"I thought it would make one heck of a country-type song, so I tried my hand at writing country songs," she recalls. "Cornell Crawford" didn't make it then. Maybe it will be this time.



K.T. Oslin
LP showcases writing

HEMET NEWS

HEMET, GA

WEDNESDAY & SUNDAY 21,000

12/11/90
TUESDAY

DEC 11 1990

BURRELLE'S

6-1

Clear, contemporary country comes in sweet-voiced K.T. Oslin's release

by JERRY SHARPE

Scrrips Howard News Service

— "Love in a Small Town," K.T. Oslin, RCA.

K.T. Oslin not only offers the listening pleasure of her clear, distinctive vocals on this new album, but showcases herself as a top-flight songwriter, too.

Oslin, 49, has marched to a different drummer since she debuted in 1987 with the "80s Ladies" album that sold more than a million copies. Her second album, "This Woman," was another million-seller in 1988.

Her acceptance showed there was a place in country music for a performer who sang and wrote about today's women.

And now, on her new album, she writes slice-of-life songs and love ballads with a different viewpoint than the usual country music. It's a modern woman's perspective.

For instance, on "Come Next Monday," her

current hit from "Love," she applies a reducing diet timetable and discipline to breaking off a love affair.

She's philosophical in "Mary and Willie," a good story song about two people remaining lonely because neither will settle for less than the perfect mate. And she lightens up with "Oo-we," a sexy, right-to-the point frolic.

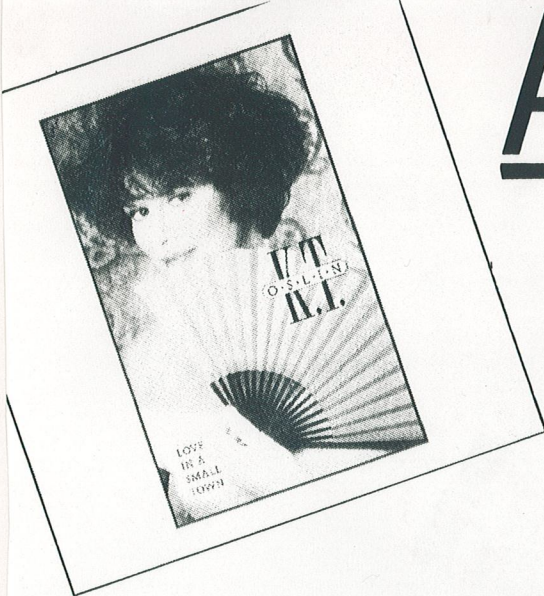
The album also has the first song she ever wrote. In 1980, Oslin, who hails from Arkansas and Texas, was doing bit parts on Broadway. While touring, she saw the words "I ain't never gonna love nobody but Cornell Crawford" scrawled on the wall of a ladies' room.

"I thought it would make one heck of a country-type song, so I tried my hand at writing country songs," she recalls. "Cornell Crawford" didn't make it then. Maybe it will be this time.

(Jerry Sharpe covers country music for The Pittsburgh Press.)

ALBUM REVIEWS

IMPORT



Please note that with the vinyl format in decline, many albums are only being released in CD or CD/Cassette formats only. We are not always advised of all formats available for any particular release. This, you will have to check with your dealer when ordering. However, where CMP has been advised of an album release in vinyl format, the symbol (V) is given against the catalogue number.

*Country Music People
(England) 12/90*

K.T. OSLIN Love In A Small Town

Come Next Monday / OO-Wee / Mary And Willi / Love Is Strange / Momma Was A Dancer / New Way Home / Cornell Crawford / Still On My Mind / You Call Everybody Darling / Two Hearts
RCA 2365



With her recent lack of CMA nominations and record product, I was beginning to think K.T. Oslin was yesterday's flavour. Don't you believe it. Like a knuckleduster on a rampage, the lady sideswipes any such thoughts with the damndest, ballsiest collection of hip country you're likely to hear this side of 2001. The pinnie and feather duster have no place in the liberated world of K.T. Oslin, ultra-cool, uninhibited and very much her own woman. In a genre of music where women have long been wary of revealing their sexuality, Oslin croons in lustful abandon, "Let's just stay in bed all day . . . and then let's ooh-ooh-wee" (from the bluesy 'Oo-Wee'), letting it be known she ain't gonna wait around to be asked.

Similar sexual abandon is implied in the jaunty 'Cornell Crawford' where singer loves nothing better than heading off down a dirt road in a pickup truck with a quart of whiskey and Cornell by her side: "We're gonna stop, we're gonna park, We're gonna get down to it and spark." Lawd, let me change places with Cornell.

Her recent hit single 'Two Hearts' (a recut of the song featured on her '80's Ladies' album) retains the self-assertive theme as a lonely K.T. offers company to an (also lonely) stranger in a bar, while the current single has the lady resolved to change her man and her figure 'Come Next Monday', though we all know *next* Monday never comes. Cut has novel synth stabs and whip crack effects.

Attitudes to kids strike a modern pose, too. 'Momma Was A Dancer' has daughter asking mother how she enjoyed herself when she was young: "Honey, Momma was a dancer, Your Momma could really get up and move around the floor", but K.T.'s sensual delivery lets on that it weren't no square dance . . .

Of course, even the most forthright of women can lose in love, and K.T.'s no exception, with 'New Way Home' and 'Still On My Mind' offering numbing confessions to a stricken heart. Brooding and passionate. 'Mary And Willie' is a sad and judgemental view of people who can't accept less than a perfect love and therefore never know love at all.

I hated the recent Dolly Parton/Kenny Rogers imitation cut of Mickey and Sylvia's 'Love Is Strange'. K.T. shows how it should be done. Moody, intimidating and compulsive, and as original as a cover can get. Check out the drum machine backing (well, surely it's a drum machine?).

Finally, a most engaging track is Oslin's cut of the old 40s' standard, 'You Call Everybody Darling', a kind of Shine On Harvest Moon with soul. Relaxed guitar and Larry Adler harp make this a delightful divertissement.

Three sets of producers are involved here so maybe they're fishing for a replacement to Oslin's original helmsman, Harold Shedd (did I hear rumours of discord?). Whatever, the backup is state-of-the-art without being crass or over-indulgent and provides a perfectly controlled setting for K.T.'s steamy deliveries.

The sexiest fortysomething in the business is back with a vengeance.

Craig Baguley

Music Row 12/23/90



K.T. OSLIN
Love in a Small Town
RCA 2365-4-R
Producers: B. Beckett, J. Leo, L. Michael Lee, K.T. Oslin, J. Scaife, J. Cotton



Highlights: "Come Next Monday," "New Way Home," "Mary and Willie"

Critique: K.T. Oslin built *Love in a Small Town*, a loosely defined concept album, from 10 years of songs, including the first one she wrote.

Oslin sings of the guises romance wears in the small-town South: Nelda Jean Prudie waxes nostalgic about weekend dances of her Texas youth; a young girl enthuses about a pick-up-driving Romeo named Cornell Crawford; and people searching for perfect partners wind up lonely.

In addition, *Love in a Small Town* contains a low-key version of the 1946 standard "You Call Everybody Darling" and a cover of "Love Is Strange" that retains the ingenuous sexuality of Mickey and Sylvia's original while downplaying the goofiness of the spoken bridge.

Oslin's coyness isn't always flattering, and the arrangements occasionally border on a new country-politan, but those moments are rare. On most of *Small Town*, Oslin displays her best assets: her worldly sensibility and complex maturity.

—Brian Mansfield



K.T. OSLIN
Love In A Small Town
 CD, CA

K.T., let me be among the first of your fans to say thank you. Thanks for staying off the road last winter to write us some songs we can sink our teeth into again. Not only do your off-the-wall, slice-of-life songs like *Mary And Willi*, *Cornel Crawford*, and *Mama Was A Dancer* refresh and "hook" our befuddled ears, but even the big commercial ballads—*New Way Home* and *Still On My Mind*—tune into a new way of looking at familiar emotional tangles. By the way, I don't think I've ever heard anybody cover *Love Is Strange* and *You Call Everybody Darlin'* quite like you do. Welcome back.
 (RCA 2365-2-R) Hansen

MCN 12/90

People 12/3/90

PICKS & PANS
SONG



K.T. Oslin
Sty. steady of voice and nobody's coquette

■ **LOVE IN A SMALL TOWN**
 K.T. Oslin

A country-pop vocalist who can belt out one number and purr her way through the next, Oslin mixes torchy ballads and honky-tonk ballads on this album.

She wrote most of the tunes herself, including the sad but pretty "New Way Home," and such kickier stuff as "Momma Was a Dancer" and "Oo-Wee." Oslin adds to the curious but workable mix the 1957 Mickey and Sylvia hit "Love Is Strange," which she does to mellow perfection, accompanied by the spare, *Twin Peaks* theme-like guitar work of John Willis and Dino Zimmerman; she also revives the 1946 Sam Martin-Ben Trace-Clem Watts country ditty "You Call Everybody Darlin'," rarely heard this side of the Happy Polkateers.

When she's not exercising her sweetly provocative vocalise, Oslin has a nice way of talking through a song, as she does through some stretches of the melancholy ballad "Mary and Willi," and more so, and to better effect, on "Still on My Mind."

Oslin's voice sounds most at home on the alternately soft and soaring "Two Hearts" (on CD only), where she sings in a harsh yet lovely way. "Two hearts are better than one/ Two hearts keep pain on the run/ When it's all night and the night's just be-

gun/ Don't you know two hearts/ Two hearts are better than one."

An able piano player herself, Oslin gets help from five other keyboardists on this, her third album. There's a bevy of drummers, bass players and guitarists too, none of whom comes close to stealing Oslin's show. (RCA)—*Lisa Shea*

K.T. Oslin: To seek out a few more old pop songs to do. Oslin usually sings only songs she has written herself, and many of them are exceptional, but her rendition of the old "You Call Everybody Darlin'" on her new "Love in a Small Town" collection was perhaps the most charming album-closer of the year.
dg. Tubene 12/27/90

Oslin turns ordinary life into music for new album

By Joe Edwards
Associated Press

NASHVILLE, Tenn. — The graffiti was printed neatly in black ink on a bathroom stall in a cafe in Due West, S.C.

"I ain't never gonna love nobody but Cornell Crawford," it declared. When K.T. Oslin read it, she chuckled. Then, pondering its directness and determination, she knew she had a song. The result is "Cornell Crawford," one of Oslin's songs in her third country music album, "Love in a Small Town."

Cut after cut, the themes and emotions are from everyday, ordinary life and hit special chords within the listener.

It is her first LP in two years, a rather long hiatus for country music. So this normally gutsy singer-songwriter confesses to a touch of trepidation.

"If you don't put out an album every year, you can be dead meat," the 48-year-old performer said in an interview as she munched on bread and Brie.

"We'll see. But I don't think you become dead meat until you are doing inferior work. Or mediocre work."

Based on her previous records, Oslin, who was born in Crossett, Ark., has little reason to worry. Her albums, "80s Ladies" and "This Woman," both sold more than 1 million copies.

She won three Grammy awards

during a meteoric rise in country music. In 1988, she unseated Reba McEntire as the Country Music Association's female vocalist of the year. McEntire had won the honor four straight years.

Now Oslin offers "Love in a Small Town," an album weaving songs of wry amusement, emotional strength, nostalgia and loneliness.

The LP's cut "Come Next Monday" is about a woman vowing to end a relationship. "Oo-Wee" is about staying home from work and frolicking. "Mary and Willie" is about two people with no love interests in their life.

"Love Is Strange" is Oslin's remake of a 1956 rhythm and blues hit by Mickey & Sylvia. Kenny Rogers and Dolly Parton also recently recorded it.

Oslin's crooning "... My sweet babe, you're the one" has almost as much feeling as an embrace. And "Cornell Crawford," inspired by the writing on a toilet wall, tells of dedication for the man who makes sparks fly.

"We all wish we had a Cornell Crawford," Oslin mused about the song. "I've been doing it in the live show for two years and it gets some of the best response of anything. People are intrigued about someone that emphatic. The sincerity of it struck me."

She wrote or co-wrote seven of the nine cuts and plays keyboard

on every song.

Kay Toinette Oslin spent most of her early years in Mobile, Ala. As a teen-ager, she settled in Houston. Ending up in New York, she was a chorus girl in theatrical productions and then turned to work as a studio backup vocalist and ad jingle singer.

She also showed a flair for songwriting. An aunt lent her \$7,000 to finance a Nashville showcase performance, which caught the attention of RCA Records. She signed an RCA recording contract in 1986 at a time when most record companies were looking for singers almost half her age.

Oslin became one of Nashville's most intriguing personalities, launching a new career in her mid-40s and writing songs from the perspective of a strong woman. Her hit singles included "Do Ya," "Two Hearts," "Hey Bobby," "Didn't Expect It to Go Down This Way" and "This Woman."

"I was different," she said. She also was outspoken. She has said candidly that she hated country music when she grew up.

"When I listened to country music in the '50s, it was almost all males who seemed very old and sang about drinking and cheating on their wives or girlfriends. A 15-year-old does not relate to that," Oslin said.

"Fortunately, it has changed, and people who say today that they



K.T. Oslin: "If you don't put out an album every year, you can be dead meat."

don't like country music probably haven't listened to it.

"Some of it I like today, some of it I don't. I don't like the real twangy, hard core, straight ahead, old style country music. I like some of it, but on a steady diet, no."

Her current album is not her only new project. She just recorded a duet with Barry Manilow, "Baby It's Cold Outside," which will be on his next album.

Oslin also has received considerable attention for her music video of "Come Next Monday." In it, she portrays the bride of Frankenstein.

"It has nothing at all to do with the song," she explained. "I thought it was time to show that I had a sense of humor. My videos have all been great but rather serious. We just went the crazy route. It's hilarious."

Oslin sings about Cornell Crawford; he's not talking

DUE WEST, S.C. (AP) — Country singer K.T. Oslin's latest song appears to be all about a local resident named Cornell Crawford, but Crawford isn't talking.

Crawford he does admit that he "could be the one" referred to in Oslin's song "I Ain't Never Gonna Love Nobody But Cornell Crawford."

Oslin said she based the lyrics on words from neatly written graffiti she found on a restroom wall 15 years ago during a concert tour stop at Erskine College in this town of 1,200 in western South Carolina.

After Oslin told her story on Arsenio Hall's talk show, retired Erskine history professor Lowery Ware launched a search and found Due West resident Cornell Crawford, now in his mid-40s and happily married with a family.

Crawford said he had never heard of the note on the wall or the song until he read a story in his newspaper.

INSPIRED BY graffiti she spotted on a restroom wall, K.T. Oslin wrote a song called I Ain't Never Gonna Love Nobody But Cornell Crawford.

It appears on her new album, *Love In A Small Town*.

Dec. 25, 1990/EXAMINER

St. Louis Post
Dispatch 1990

Country singer K.T. OSLIN'S latest song appears to be all about CORNELL CRAWFORD of Due West, S.C., but Crawford isn't talking.

Crawford does admit that he "could be the one" referred to in Oslin's song "I Ain't Never Gonna Love Nobody But Cornell Crawford."

Oslin said she based the lyrics on words from neatly written graffiti that she found on a restroom wall 15 years ago on a concert tour stop at Erskine College in Due West, a town of 1,200 in western South Carolina.

After Oslin told her story on ARSENIO HALL'S talk show, retired Erskine history professor

LOWERY WARE made a search and found Crawford, now in his mid-40s and happily married with a family.

Crawford said he had never heard of the note on the wall or the song until he read a story in his newspaper.

K.T. Oslin Finds Her Man

When K.T. Oslin wrote

the *I Ain't Never Gonna Love Nobody But Cornell Crawford*, she used a name she found scrawled with this message on a restroom wall at Erskine College in Due West, S.C. That was 15 years ago, she said. After relating this story on an appearance on the *Arsenio Hall* TV show,

Is he the real Cornell Crawford?



OSLIN

DUE WEST, S.C. (AP) — K.T. Oslin's latest song appears to be all about a local resident named Cornell Crawford, but Crawford isn't talking.

Crawford does admit that he "could be the one" referred to in Oslin's song *I Ain't Never Gonna Love Nobody But Cornell Crawford*. Oslin said she based the lyrics on graffiti she found on a restroom wall 15 years ago at Erskine College in this town of 1,200. After Oslin told Arsenio Hall her story, retired Erskine professor Lowery Ware searched and found Cornell Crawford, in his 40s and happily married. Crawford said he had never heard of the note on the wall or the song until he read a news story.



DEBBIE HOLLEY

Assistant Country Music Editor

1. **Best Single:** Bette Midler, "From A Distance"—a crystalline experience, but let's not forget Nanci Griffith's charming folk

BILLBOARD DECEMBER 22, 1990

rendering.

2. **Country Videos:** K.T. Oslin's "Come Next Monday" and Eddie Rabbitt's "On Second Thought." Fine examples of inventive video production.

SUN. DEC 23
1990

(The INDIANAPOLIS STAR, Sunday)



K.T. Oslin sings her favorite Christmas songs on *Home for the Holidays*, a 30-minute concert special airing at 8:30 p.m. Monday on the Nashville Network. Clint Black also performs.